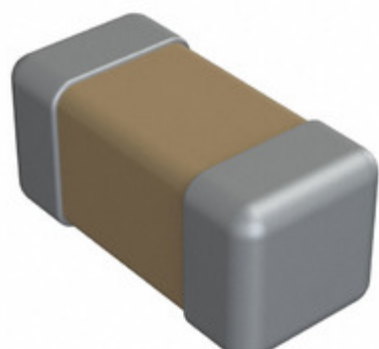


0603J0250472JXR



Part Number: [0603J0250472JXR](#)
Manufacturer: [Knowles Syfer](#)
Description: CAP CER 4700PF 25V X7R 0603
Data sheet: [MLCC Capacitor Datasheet](#)
[MLCC Catalog](#)

RoHS Status: Lead free / RoHS Compliant
Ship From: Hong Kong
Shipment Way: DHL/Fedex/TNT/UPS/EMS

Images are for reference only.
 See Product Specifications for product details.
 Buy 0603J0250472JXR with confidence from
 Component-World.HK, 1 Year Warranty

[Request For Quotation](#)

PRODUCT PARAMETER

Part Number	0603J0250472JXR	Manufacturer	Knowles Syfer
Description	CAP CER 4700PF 25V X7R 0603	Lead Free Status / RoHS Status	Lead free / RoHS Compliant
Quantity Available	388450 pcs	Data sheet	MLCC Capacitor Datasheet MLCC Catalog
Category	Capacitors	Voltage - Rated	25V
Tolerance	±5%	Thickness (Max)	0.032" (0.80mm)
Temperature Coefficient	X7R (2R1)	Size / Dimension	0.063" L x 0.032" W (1.60mm x 0.80mm)
Series	-	Ratings	-
Packaging	Tape & Reel (TR)	Package / Case	0603 (1608 Metric)
Operating Temperature	-55°C ~ 125°C	Mounting Type	Surface Mount, MLCC
Moisture Sensitivity Level (MSL)	1 (Unlimited)	Manufacturer Standard Lead Time	8 Weeks
Lead Style	-	Lead Spacing	-
Lead Free Status / RoHS Status	Lead free / RoHS Compliant	Height - Seated (Max)	-
Features	-	Failure Rate	-
Detailed Description	4700pF ±5% 25V Ceramic Capacitor X7R (2R1) 0603 (1608 Metric)	Capacitance	4700pF
Applications	General Purpose		

Component-World.com is a Reliable Stocking Distributor of Electronic Components. We specialize in all Knowles Syfer series electronic components. We have 388450 pieces of Knowles Syfer 0603J0250472JXR in stock available now. Request a quote from electronics components distributor at Component-World.com, our sales team will contact you within 24 hours.
 RFQ Email: info@Components-World.com

RELATED PRODUCTS

	Part#: 0603J0250471MDT Description: CAP CER 470PF 25V X7R 0603	Manufacturers: Knowles Syfer	RFQ
	Part#: 0603J0250472KDR Description: CAP CER 4700PF 25V X7R 0603	Manufacturers: Knowles Syfer	RFQ
	Part#: 0603J0250471MXT Description: CAP CER 470PF 25V X7R 0603	Manufacturers: Knowles Syfer	RFQ
	Part#: 0603J0250472MDT Description: CAP CER 4700PF 25V X7R 0603	Manufacturers: Knowles Syfer	RFQ
	Part#: 0603J0250471KXR Description: CAP CER 470PF 25V X7R 0603	Manufacturers: Knowles Syfer	RFQ
	Part#: 0603J0250472JDR Description: CAP CER 4700PF 25V X7R 0603	Manufacturers: Knowles Syfer	RFQ
	Part#: 0603J0250471KFT Description: CAP CER 470PF 25V C0G/NP0 0603	Manufacturers: Knowles Syfer	RFQ
	Part#: 0603J0250472MXR Description: CAP CER 4700PF 25V X7R 0603	Manufacturers: Knowles Syfer	RFQ
	Part#: 0603J0250472KDT Description: CAP CER 4700PF 25V X7R 0603	Manufacturers: Knowles Syfer	RFQ
	Part#: 0603J0250473JDR Description: CAP CER 0.047UF 25V X7R 0603	Manufacturers: Knowles Syfer	RFQ
	Part#: 0603J0250471MXR Description: CAP CER 470PF 25V X7R 0603	Manufacturers: Knowles Syfer	RFQ
	Part#: 0603J0250472MDR Description: CAP CER 4700PF 25V X7R 0603	Manufacturers: Knowles Syfer	RFQ
	Part#: 0603J0250472JXT Description: CAP CER 4700PF 25V X7R 0603	Manufacturers: Knowles Syfer	RFQ
	Part#: 0603J0250471MDR Description: CAP CER 470PF 25V X7R 0603	Manufacturers: Knowles Syfer	RFQ
	Part#: 0603J0250472MXT Description: CAP CER 4700PF 25V X7R 0603	Manufacturers: Knowles Syfer	RFQ
	Part#: 0603J0250472KXT Description: CAP CER 4700PF 25V X7R 0603	Manufacturers: Knowles Syfer	RFQ
	Part#: 0603J0250471KXT Description: CAP CER 470PF 25V X7R 0603	Manufacturers: Knowles Syfer	RFQ
	Part#: 0603J0250472JDT Description: CAP CER 4700PF 25V X7R 0603	Manufacturers: Knowles Syfer	RFQ
	Part#: 0603J0250471KFR Description: CAP CER 470PF 25V C0G/NP0 0603	Manufacturers: Knowles Syfer	RFQ
	Part#: 0603J0250472KXR Description: CAP CER 4700PF 25V X7R 0603	Manufacturers: Knowles Syfer	RFQ

Related keywords for 0603J0250472JXR

Knowles Syfer 0603J0250472JXR	0603J0250472JXR distributor	0603J0250472JXR supplier	0603J0250472JXR price
0603J0250472JXR download datasheet	0603J0250472JXR datasheet	0603J0250472JXR stock	buy 0603J0250472JXR
Knowles Syfer 0603J0250472JXR	Syfer 0603J0250472JXR		